

GLOUCESTER COUNTY AMATEUR RADIO CLUB. W2MMD

CLUB MEETING

WEDNESDAY, JUNE 5, 1991; 2000 SHARP;  
AT VFW POST 2117, WOODBURY HEIGHTS, NJ  
=====

G.C.A.R.C. OFFICERS

PRESIDENT  
VICE PRESIDENT  
TREASURER  
REC. SECRETARY  
COR. SECRETARY

NORM CONNELLY  
MARLA BOZARTH  
CHUCK COLABRESE  
MARY ELLEN WELLS  
RICH GRAVES

WA2BMG  
N2DWR  
WA2TML  
N2KLD  
N2ITX

DIRECTORS

3 YR. KEN BOZARTH KN2U  
3 YR. IRMA COLABRESE N2FNF  
2 YR. BOB LAYTON KB2COB  
2 YR. FRANK MALINOWSKI KE2NY  
1 YR. CHRIS CHAMBERLAIN N2IVN  
1 YR. MIKE LIPNITZ N2FKS

TRUSTEES

4 YR. MILT MARDER  
3 YR. HOWARD MARDER  
2 YR. VIRGINIA MACRIE  
1 YR. JIM CLARK

WA2FGA  
WA2IBZ  
KA2ZZA  
KA2OSV

COMMITTEE CHAIRPERSONS

ADVERTISING  
ARES/RACES  
AWARDS  
BANQUET  
CHAPLAIN  
CONSTITUTION  
CONTESTS  
CROSSTALK EDITOR  
DATA PROCESSING  
DX  
FIELD DAY  
HAMFEST  
HELP/WELFARE  
HISTORIAN

—  
WB2LNR  
K2ZA  
N2DWR  
WA2BMG  
WB2DXB  
KB2IQP  
KB2AYU  
KB2COB  
K2JF  
KB2FRM  
N2KLE  
N2ILB  
—

HOSPITALITY  
LEGISLATION  
MEMBERSHIP  
NETS  
PUBLICITY  
REPEATERS  
SITE  
SCHOLARSHIPS  
SPECIAL EVENTS  
SUNSHINE  
TECHNICAL  
TRAINING/TESTING  
WAYS/MEANS

N2AN  
—  
WB2GSF  
WA2TOP  
N2DWK  
WA2TML  
KB2GTV  
WN2T  
—  
KB2EUA  
KB2AYU  
WA2VQG  
N2FNF

CLUB REPEATERS

147.78/18 MHZ. 224.66/223.06 MHZ. 442.100/447.100 MHZ. CTCSS 131.8

CLUB NETS

ARES/RACES . . . EVERY SUNDAY AT 2000 HRS. ON THE 147.78/18 AND 224.66/223.06 RPTS.  
10 METERS . . . . . EVERY TUESDAY AT 2100 HRS. ON 28.350 MHZ.

Presidents Message - June 1991

Hi there, everybody. Hope you're surviving the heat because we have a long summer ahead. Well, well, so you thought kite flying was easy, eh? We had a great turnout for our first annual kite flying day. I sure wish all of you could have been there. Most of us did pretty well when the wind was cooperating but when the wind died down, that was a different story. I even got into the act and flew a kite and I haven't done that since I was a kid. The food was great, too. We did have one problem, though--Marla only made two trays of brownies and boy did they go like hotcakes. Thanks everybody for making the day great for the "kids" of all ages. Hope we do it again next year.

EXTRA! EXTRA! Get your raffle tickets! Only \$2 each! Hey, everybody, I've been checking with Irma and she tells me the tickets are going pretty good. I took a load of them to school with me one day and couldn't believe how quickly I sold out of them. This was almost as easy as taking up the collection at Sunday Mass. I just hope Gamblers Anonymous doesn't catch up with me. I hope you're all having the same success with them. Remember, the more we sell, the more we make. There's still plenty of time--the drawing isn't until 9:00 PM on June 5. If you need more tickets, just give one of the Way and Means members a call. They are: Irma, Chuck, Roz, Alameda, Earl or Marla. We could use everybody's help.

Guess what's just around the corner --YEP -- good ole FIELD DAY. Hey, you know, a lot of work goes into making this day a big success but there's also a lot of fun to be had by all. I mean, you don't have to come out and spend the whole night there (unless you want to) but if you've got a couple of hours or so, why not come on out and have some fun relieving somebody for a while. Heck, if you don't want to do that, a little cheering on wouldn't hurt a bit. Remember, this is a club sponsored event and every little bit of help we get adds points to the club's score. I'll bet you'd all be as proud as I to see our club name among the top clubs when the final results come out in the QST! Ah, what the heck, at least come out and see our new grass. You may as well, your dues helped pay for it!

So, listen, I better close for now before this becomes a book. But, please keep in mind what I always say and mean--WE ARE GOOD AND WE ARE GETTING BETTER! And, hey everybody, thanks a million for all the support and help you give me. You show it too many ways to count. No wonder being President of this club is so great -- YOU'RE GREAT! Bless ya.

## MAY MEETING MINUTES

The monthly meeting of the GCARC was held on May 1, 1991, at the VFW Post in Woodbury, New Jersey. The meeting was called to order at 20:00 hours by WA2BMQ. Minutes of the previous meeting were read and approved. Treasurer's report was read and approved. Treasurer reminded members that each ARRL membership processed through the Club provides \$2.00 for the Club.

**CORRESPONDENCE:** Newsletters and hamfest flyers displayed.  
**VISITORS:** Mike Sapio  
**UPGRADES:** None

### **COMMITTEE REPORTS:**

**FIELD DAY:** Need someone to operate the generators; still need a few Band Chairmen and a Publicity Chairman.

**HAMFEST:** Flyers have been printed. Need breakfast servers and more Committee Chairmen.

**MEMBERSHIP:** Board has approved two new members: Jim Paris (KB2KPE) and Lew Parker (N2LZS).

**REPEATERS:** Having some sensitivity problems on 2 meters. Still trying to locate the source of the problem.

**SITE:** Reviewed list of jobs to be done; need to schedule a work party. Must dispose of rocks and large stones before next mowing.

**SCHOLARSHIPS:** Have received a poor response so far.

**SPECIAL EVENTS:** KA2YKN asked for volunteers to help with the Desert Peace Parade on May 4 at Camden County Park. W2GSN announced that the ARC Bike Ride has been rescheduled for May 5 in Washington Township.

**SUNSHINE:** Sent sympathy card to N2ITX, on death of his grandfather. Sent get-well cards to N2DWR and Ed Stetser, who were both recently hospitalized.

**TRAINING:** Current class will be over in two weeks.

**WAYS & MEANS:** Raffle tickets will be distributed tonight. Drawing will be at next meeting.

**DX:** Reported on band conditions.

### **OLD BUSINESS:**

**TAX-EXEMPT NUMBER:** Still trying to reach Neil Sternstein, to ask him to process.

**WHITE ELEPHANT SALE:** Discussed level of interest in having the sale. W2GSN motioned to have it in October, with provision that all unsold items be kept by members, not stored by the Club. Motion seconded and passed.

**KITE FLYING DAY:** Set for May 19.

**TELEPHONE FILTER:** W2GSN advised that K2OWE has put together an effective, low-cost telephone filter. Anyone interested should see him for the plans.

### **NEW BUSINESS:**

**COPY MACHINE:** KB2AYU will get estimates on repairs and outside printing.

**FINANCIAL STATUS:** With 37 non-renewals, we are below what we had projected for Membership income. Need to watch budget very carefully.

continued

**RAFFLE:** Only those who want to will be given tickets to sell. Proceeds have not been budgeted, and membership will decide where they should be applied.

**PROCEDURE:** President or the Board must be consulted before a member takes any action on behalf of the Club.

**4-H:** W2GSN suggested someone talk with 4-H representative about parking. WA2BMQ will call. Also, no water yet at site.

N2AIV motioned to adjourn. Motion passed. Meeting adjourned 21:36 hours.

Respectfully submitted, N2KLD, Recording Secretary.

=====

## Ways and Means Report

Our first raffle drawing will be at 9 PM on Wednesday, June 5. Good luck to all ticket buyers and thanks to all ticket sellers.

It is very important that all stubs and money or unsold tickets be returned to a committee member before or at the meeting. 73, N2FNF

### **Ways and Means Committee Members:**

KB2FRM, Earl KB2JKD, Almeida

N2AKL, Roslyn N2DWR, Marla

N2FNF, Irma WA2TML, Chuck

=====

## **Field Day 1991 - June 22-23**

Everything is moving right along, most of the loose ends have been taken care of, with the exception of:

1. We still need a band chairman for 15 Meters CW and 20 Meters CW.
2. We still need someone to take care of the publicity for field day.
3. It would be nice if someone were to volunteer to run the generators, so that the people that are trying to work the bands don't have to do double duty.

All band chairman should get in touch with Roslyn (N2AKL) and let her know how many operators you are expecting, so she will be able to plan the menu.

As is standard procedure now, those that wish to come out Friday evening and begin setting up may do so.

Please bring your 2 meter HT and charger if you have one, 147.54 MHZ. will be our on site intercom freq.

Anyone wishing to have an antenna on the tower please contact Art (KA2DOT)

73' Earl - KB2FRM

## A STRIKING APPEARANCE FOR VENUS

Venus, the planet named for the Greek goddess of love and beauty, lives up to its name this month with a series of beautiful apparitions in the evening sky. Venus reaches its greatest eastern elongation - its greatest separation from the Sun as viewed from Earth - on June 13. On that evening the planet appears at its highest in the sky and remains visible in the west for about three hours after sunset.

But even more spectacularly, Venus appears very near two other bright planets, Mars and Jupiter, this month. Early on the evening of June 17, as seen from the Western Hemisphere, Venus passes 1.2 degrees north of Jupiter. Six days later Venus appears just 0.3 degrees from the Red Planet Mars. You can follow the celestial meanderings of the three planets throughout the month by observing them every clear night. This will be something you can observe during FIELD DAY.

Venus is by far the brightest of the three planets, with Jupiter next and Mars last. Aside from the Moon, Venus is the brightest object in our night sky.

Venus is bright for two reasons. First, it is very near Earth (in astronomical terms), whisking to within 26 million miles of our planet at its nearest point. Second, Venus is shrouded by a veil of bright clouds that reflects nearly two thirds of the sunlight reaching the planet.

For centuries, the clouds kept astronomers from peering at the Venusian surface and helped foster the planet's image as Earth's heavenly "twin." But American and Soviet Venusian space probes have given us a picture not of paradise, but of hell: a surface awash in dusky reddish-orange light, an atmospheric pressure more than ninety times as great as Earth's, and a surface temperature of 900 degrees Fahrenheit. The highly reflective clouds are composed of sulfuric acid droplets.

The latest Venus space probe the Magellan has now taken over 75 % of Venus' surface and Astronomer Saunders, Venus Project Manager, emphasizes that the new findings represent just a taste of discoveries to come. Trx K2JF

=====

## **A DYING BREED, THE SHIP BOARD RADIO OFFICER**

Technological change, spurred on by constantly evolving "Information Age" technologies, hasn't stopped at the desks of workers ashore. It has also intruded upon one of maritime's most time-honored professions, that of the "Radio Operator."

Sadly, new technology has numbered the days of the Morse Code and the way Radio Officers carry out their valuable mission aboard ships at sea.

According to the Federal Communications Commission, February 1, 1992 is the date Morse Code gets replaced by its computerized successor.

Radio officers on non-U.S. registered vessels will have a slightly longer period to adjust - February 1995. But, by 1999, Morse Code will be gone entirely.

As a prelude, the FCC has ordered all U.S. ships to change their radio frequencies on July 1, 1991. The new frequencies usher in a new computerized ship-to-shore communications system that will employ satellites and digital technology.

Trx American Marine Engineer/K2JF

## **DID YOU KNOW ??**

On June 6, 1920 - Armstrong had confronted the problem while in France during WWI of how to receive and amplify extremely high frequency radio emissions. The solution lay in "down conversion" or superheterodyning, the essential principle which makes possible all high frequency radio and radar.

On June 13, 1831 - James Clerk-Maxwell mathematically substantiated the theories of Faraday and predicted in 1864 that if electric "vibrations" or oscillations could be produced, they would propagate like light. Hertz, following Maxwell's lead, confirmed the theory.

On June 16 1934 - Armstrong demonstrated FM from the Empire State Building to a receiving station on Long Island 70 miles away.

## DON'T FORGET

JUNE 14TH FLAG DAY

JUNE 16TH FATHER'S DAY

JUNE 21ST SUMMER SOLAR SOLSTICE AT 2119Z. Summer Begins in N.Hem. Longest day of the Year up here.

JUNE 22; 1800 Z - 23; 2100 Z --- FIELD DAY ---

=====

## DX REPORT

D2 ANGOLA..From the first day of June to June the 11th a group of Ukraine operators will be active on CW and SSB. If all goes well !!! They are having a little difficulty getting a flight into Angola, since Aeroflot does not fly direct to Luanda. Let's hope..Many need this one.

YJ VANUATU..Koji will sign YJ0NX from Vanuatu June 12-19. He will operate on CW and SSB, 160-10 meters, including the WARC bands.

ZS1 PENGUIN IS..The DXAC has recommended that the Penguin Islands become a separate country. Details can be gotten from Tony Gargano (N2SS) a member of our Club who is also a member of the DXAC.

A51 BHUTAN..A very sad story about this operation from Jim Smith VK9NS (A51JS). If anyone is interested I will let you know the information.

VNG MOVES TO 16 MHZ Australian time station VNG should now be transmitting on 16 MHz, after moving from 15 MHz on May 8th. Here is chance to check propagation between the 20 and 17 meter bands.

ET2A ETHIOPIA..With all the "noise" and political up-heaval going on ET2A has been reported on the air as of May 30th. He expects to be there until June 16th. He is on SSB and CW. 14007 looking up as far as 14035, 21020 looking up as far as 21045. He will start his CW operation "Transceive" and as the "pile-up" gathers he starts listening up.

GOOD DXING C U in the Pile-Ups. Trx K2JF

FCC Survey Results

The following is from the ARRL Letter (vol. 10 no. 10) dated May 16, 1991  
 FCC SURVEY SEEKS TO LINK AMATEUR POWER, RFI

The Federal Communications Commission has released data gathered during its Feb. 26-27 Amateur Power Project and concluded that;

- \* Most amateurs do not operate at the minimum (power) required by the rules;
- \* Operating powers of 100 watts or less can cause interference;
- \* Simply reducing the transmitter power does not alleviate interference in most cases.

In its instructions for the survey to field offices the FCC stated only one purpose, "to see if (amateur radio stations) are using minimum operating power as required by Section 97.313(a) of the rules."

But the Commission's executive summary of the study, just released, added an additional purpose, to "see if there is a link between operating power and interference to home electronic entertainment equipment."

Three methods were used to select the 209 amateur stations that were subsequently observed:

METHOD A was to visit a station for which a consumer complaint had been received by the Commission (31 stations);

METHOD B was to select a station that was being "monitored in operation" (42 stations);

METHOD C was a random selection by various means (133 stations).

FCC field offices were instructed to visit the amateur stations and to "rate the quality of communications as though you were the other amateur." Following a power measurement, the operators were asked to reduce their power by half and to continue or reestablish the QSO, whereupon the FCC field office personnel again would rate the "quality of communication."

Power reductions ranged from 1500/525 watts (on 20 meters) to 8/3 watts (on 6 meters). This latter measurement was taken at a station creating RFI; the interference was observed dropping from "heavy to light."

In most cases, reducing output power by half or more resulted in little or no loss of communications, by Commission staffers' reckoning. The data released by the Commission, however, does not indicate the type of contacts being made - local or DX? Strong signal or weak? Level of interference from adjacent stations? Mode of transmission?

In 23 cases where RFI was observed, reductions in power resulted in less interference in 10 cases, in no change in 11 cases, and RFI actually was observed to INCREASE at the lower power level in two cases.

Interference - where found - was spread among all bands 80-6 meters. Of the 209 station visits and subsequent power measurements, the breakdown by frequency bands was as follows:

3.5	7	14	18	21	28	50	144	Band
16	39	66	1	31	44	1	1	Stns

The Amateur Power Project, conducted by the FCC's Field Operations Bureau, has not yet been commented on by the Commission's Private Radio Bureau.

73 de Bill/WA3SCW - ARRL MDC Bulletin Manager (INX KE2M P1BBS)

=====

**FOR SALE**

- Item 1 - Yaesu FT 101 EX HF Transceiver
- Item 2 - Yaesu FR 101 Digital Receiver
- Item 3 - Antenna
- Item 4 - LP Filter
- Total Package \$ 350.00 Call Neil @ 854-3534
- ( Owner will not sell separately )

MFJ VERSA TUNER 2 - MODEL 940B, 300 WATTS, LIKE NEW  
 \$ 45.00 Call Jay @

=====

**Editors Corner**

The past month has been a hectic one. Here I am rushing once again to get another issue of Crosstalk into your mailboxes.

The bases are in and soon I will have my 50 foot tower back up in its new location and a new heavy duty 80 footer where the 50 footer used to be. I hope to have some serious VHF/UHF arrays on the new tower before the end of summer.

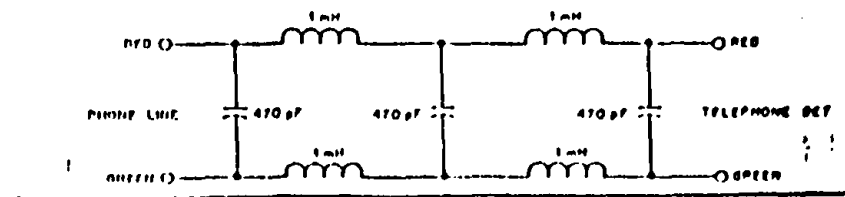
I hope you noticed the much improved copy quality this month. The copies were done by a good friend of mine in return for a complimentary ad. If the club would like, we can have the copies done by my friend, each month, at a very good price.

73 AJ, KB2AYU

=====

Telephone RFI Filter

As mentioned in the meeting minutes, Jim, K2OWE, has built and tested a very simple yet very effective telephone RFI filter. The filter works very well and requires only a few parts. If enough club members are interested, the necessary parts can be ordered in bulk at a good discount. See the schematic diagram below.



continued

# **PTS "Your Office Outlet"**

---

**Supplies - Furniture - Printing  
Equipment Sales & Service**

**#7 Williamstown Pavilion  
604 N. Black Horse Pike  
Williamstown, NJ 08094**

**Phone: (609) 728-8800  
F A X: (609) 629-8554**