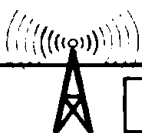


# W2MMD



## 1998 Officers

President	Al Arison	KB2AYU
Vice President	Harry Bryant	AA2WN
Treasurer	Jim Simeone	KC2AOF
Recording Sec.	John Schumacher	N2AWD
Corres. Sec.	John Fisher	K2JF

## Directors

Bob Krukowski	KR2U
Chuck Colabrese	WA2TML
Jack Stauffer, Jr.	KA7LAX
Sam Zeola	KB3ZWK
John Lloyd	KA2EZN
Walt Seitz, Jr.	KB2JCG

## Trustees

Stu Cleveland	N2WUP
Mel Sultzburgh	W2NM
Tony Scandurra	KG2MY
Ray Martin	WB2LNR

## GCARC Meetings

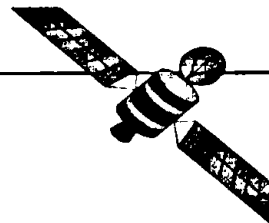
### General Membership:

7 p.m., 1st Tuesday every month,  
Gloucester County Library, 389 Wolfert Station  
Rd., Mullica Hill, NJ.

### Board of Directors:

8 p.m., 3rd Wednesday every month,  
GCARC site, Hamison Twp. 4-H Grounds  
(approximately one mile south of Mullica Hill  
on Rt. 77).

*Gloucester County Amateur Radio Club*



## 1998 Committee Chairpersons

Advertising	Ray	N2WHL
ARES/RACES	Chic	WA2USI
Awards	Jack	K2ZA
Banquet	Bob	KR2U
Budget *	Bob	KR2U
Callbook Info.	John	K2JF
Clubhouse Site *	Stu	N2WUP
Constitution *	Ken	KN2U
Crosstalk	Art	KA2DOT
Data Processing	Art	KA2DOT
DX	John	K2JF
Field Day *	Tony	KG2MY
Hamfest *	John	KA2EZN
Hospitality *	Ray	WB2NBJ
Membership *	Jim	KC2AOF
Nominations	Bob	KR2U
Publicity *	Ray	N2WHL
Repeaters *	Chuck	WA2TML
Scholarships	Greg	WN2T
Special Services	Open	
Sunshine	Miriam	KB2EUA
Technical	Jack	KA7LAX
Training & Testing	Chic	WA2USI
TV	John	K2JF
4-H Parking	Bob	KR2U

(\* Standing Committee)

## NETS

**ARES/RACES - Sundays, 2200 Hrs**  
**(147.780/180 & 223.06/224.66 Repeaters)**

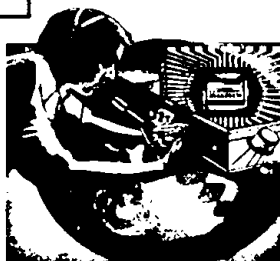
**10 Meter - Sundays following the**  
**ARES/RACES net (28.350 Mhz)**

## Club Repeaters and Webpage

147.780/180 Mhz    223.06/224.66 Mhz  
447.100/442.100 Mhz (CTCSS 131.8)

Web: <http://users.snip.net/~gradywhite>

E-Mail: [gradywhite@snip.net](mailto:gradywhite@snip.net)



# GCARC CROSSTALK

APRIL 1998

## President's Message

March has been a rather nasty month. We have gotten more than our share of wind and rain. Other areas of the country have had to deal with all sorts of inclement weather. I'm sure amateur radio has been a valuable resource in those areas hardest hit. Make sure your gear is ready in case of an emergency!

I hope everyone has renewed their membership in the GCARC. We will try to print an updated roster in the next month or two. In the coming month, I am planning on getting started on some major projects at the clubhouse. How much gets done depends on the weather and on manpower. If you would like to volunteer your services contact me or Stu, N2WUP.

Last month the program was a short video about SAREX, (space-shuttle amateur radio experiment). It seemed to be well received. During the video the astronauts were shown making some contacts using SSTV, (slow scan television). A comment was made that maybe there would be an interest in a SSTV demo. So, I will try to get some gear together and give a short introduction to SSTV at the upcoming meeting.

See you there! 73, Al KB2AYU

---

## LEGISLATIVE

New Jersey Bill A.225 is being reintroduced in the legislature which will allow the words "Amateur Radio" to be put on future automobile license plates that have an amateur call sign on them. Its purpose is so that in times of an emergency, people can readily identify amateur operators by their call plates. As in the past when there were laws favorable to us on the floor, saturate any and all politicians (and anyone else you know who might have some pull) with QSL cards to show our support for the bill.

TNX to Jean Priestley KA2YKN SM for SNJ

## DX REPORT

3D2 - Yamato Amateur Radio Club members JA1JQY.

JA1KJW, JA3MCA and JA8VE will be active from Fiji respectively as 3D2SH, 3D2HI, 3D2TK and 3D2KZ on 2 and 3 May. QSL via home calls. <TNX JA1ELY> 3V

5B - RA9JX, RA9JR, UA9MA, UA9YAB, RA0AM, RV0AR, UA3TT, RZ3TX, RZ9UA, UN7FZ and others will participate in the CQ WW WPX SSB Contest as P3A (Multi-Multi) from Cyprus. QSL via W3HNK.

9M6 - Pekka, OH2YY will now participate in the CQ WW WPX SSB Contest as 9M6AAC from East Malaysia. QSL via OH2YY (Pekka Ahlqvist, Vapaalanpolku 8 B, 01650 Vantaa, Finland).

9M6 - Phil, VR2CT (aka HS0/G4JMB) will be active again as 9M6CT from East Malaysia between 29 March and 3 May. He plans to concentrate on 80 and 40 metres. QSL to Phil Weaver, Box 7, Bangkok 10506, Thailand.

9N - During his recent staying in Nepal K4VUD/9N1UD visited Satish, 9N1AA and saw his new home under construction. Satish should move in and have all band and all mode capacity by the end of the summer. He also has room and permission for a 160 metre antenna.

A4 - An operation organized by the Royal Omani Amateur Radio Society (ROARS) is expected to take place from Daymaniyat Island in the last week of March probably with the call A43DI. QSL via A47RS. <TNX The Daily DX>

A6 - Ali, A61AJ will be very active from 21 March through 1 April on all bands with emphasis to 40, 80 and 160 metres (20-21 UTC for Europe and Japan, 00.00-02.30 for North America). He will also participate in the CQ WW WPX SSB Contest. QSL via W3UR (Bernie McClenny, 3025 Hobbs Road, Glenwood, MD 21738, USA).

CT3 - Bert, PA3GIO will be active (20, 17, 15, 12 and 10 metres) as CT3/PA3GIO/m from Madeira (AF-014) between 26 March and 2 April. QSL via PA3GIO.

CX - Al, CX8AT will participate in the CQ WW SSB Contest as CV8D. QSL via bureau to CX8AT. <TNX CX8AT>

DU - Robin, DU9RG will participate in the CQ WW WPX SSB Contest as 4H9RG. QSL via DU9RG (Robin U. Go, 818 Acacia Avenue, Ayala Alabang Village, 1780 Muntinlupa City, Philippines).

EA8 - DL7AU, DL7URB, DL7UBA, DF8XC and DL7VRO are active (on all bands CW, SSB and RTTY) as ED8CTM from Canary Islands until 6 April. They will participate in the CQ WW WPX SSB Contest. QSL via DL7VRO.

EI - Dick, G3PFS will be active (on 10-20 metres SSB, WARC bands included) as EJ/G3PFS from Cape Clear Island between 28 March and 12 April. QSL via G3PFS.

EM\_ant - Oleg, UR8LV is active as EM1LV from Akademik Vernadsky Base (WABA UR-01) on Galindez Island Antarctica. QSL via UR8LV (Oleg Satyrev, P.O.Box 9909, 310070 Kharkov, Ukraine).

EK - Philippe, F5PFO (ex J28FO) will be active (on all bands CW and SSB) from New Caledonia for two years starting on 1 April. His callsign is not known so far. QSL via F6AJA.

FM - Bruno, F5JYD will be active (on 10-160 metres, with emphasis to 12 and 17 metres) as FM5JY from Martinique (NA-107) for four months starting on 25 March. QSL via F5JYD.

FR - Laurent, F5MUX should be active sometime after 1 April from Reunion Island (FR) and Mauritius (3B8). He might also stop briefly on Rodriguez Island (3B9).

FT5X - Helios, F6IHY is active as FT5XN from Kerguelen through July. He operates amateur radio in his spare time, which depends on his work schedule, and reports the following times for stations looking to work him: 02.00-05.00 UTC 20 metres, 02.00-03.00 UTC 40 metres, 02.00-04.00 UTC 30 metres, 12.00-15.00 UTC 20 metres, 17.00-19.00 UTC 40 metres. QSL via F6PEN either direct (Gerard Ribes, 16 rue Viollet Leduc, Toulouse, 31100 France) or through the bureau.

FT5Z - Lyon DX Gang members Mehdi, F5PFP and Eric, F5SIH are now scheduled to arrive on Amsterdam Island on 25 November. They should be active as FT5ZH (10-160 metres CW, SSB and RTTY) from 27 November to 23 December. QSL via F6KDF. The DXpedition web site is at <http://perso.easynet.fr/~f5nod/ft5z.html>

I - Franco, IK8WEJ will be active in the main contest as IR8J. QSL via IK8WEJ. <TNX IK8WEJ>

I - Special event station IR2A will participate in the CQ WW WPX SSB Contest from C.C.R. (Centro Comunita' delle Ricerche) at Ispra (Varese). It will count as "wild card" for WASA. QSL via IK2HTW.

JA - JG1SZE/0, JJ1SLV/0, JP1TBG/0, JQ1ALQ/0, JI3DST/0, JR9MAR/0 and 7K4FGQ/0 will be active from Awashima on 17 and 18 April. They plan to operate on 10-40 metres SSB and CW with three stations. QSL via home calls.

JA - JJ1LIB/6 and JN1EVG/6 will be active on SSB and CW from Daito Is between 21 and 24 April.

JA - JA5UIM/4 will be active (CW and SSB on the usual IOTA frequencies) from Oki Archipelago (AS-041) between 28 and 30 April. QSL via JA5UIM.

KH2 - Guam Contest Club members JG3RPL/N1BJ, JI3ERV/NH2C, JK3GAD/AL7NC and JH7QXJ will participate in the CQ WW WPX SSB Contest as AH2R (Multi-Single) from Guam. QSL via JI3ERV. Questions or comments are welcome at [gcc@seo.amagasaki.hyogo.jp](mailto:gcc@seo.amagasaki.hyogo.jp)

TNX 425 DX, QRZ DX, ARRL TNX K2JF

## Sunshine Committee update

From what Miriam tells me things have not been all that sunny for her and Len. They were both rather ill during January with the Australian flu. Also, Len has been spending some time in the hospital and by the time this goes to print he should be home.

Milt Marder has had eye surgery and he is reported to be doing quite well.

Miriam has assured me that being the weather is improving and staying light later that she and Len

should be making it to the meetings again soon.

## HAPPY BIRTHDAY TO THE FOLLOWING FOR THE MONTH OF APRIL FROM ALL THE MEMBERS OF G.C.A.R.C.

CALL	FIRST	LAST	DAY
-----	-----	-----	---
A12B	RAYMOND	METZGER	2
N2WIB	WILLIAM	WYATT SR	4
KA2EZN	JOHN	LLOYD	4
KA2KTW	GREGORY	GLENN	7
WB2YLO	THOMAS	OAKMAN	9
N2STQ	WILLIAM	KING	10
KB2UYT	RONALD	BLOCK	12
AA4N	GURDON	COOPER	12
KD2CR	LEONARD	KRAVITZ	17
KB2ZTL	WHITNEY	MYERS	18
N2FNF	IRMA	COLABRESE	18
N2SRO	MIKE	MOLLET	18
KR2U	ROBERT	KRUKOWSKI	24

## What's doing at N2CQ

QRP stations are at the front of projects at N2CQ, whether contests, DX, or building rigs. Latest rig completed is a 20 Meter CW transceiver from a kit from Dan's Small Parts and Kits. Model NW80/20. 5 watts with superhet receiver with QSK. On the bench is a Pixie kit transceiver for 80 meters, the absolute minimum of parts for any transceiver, 100-150 Milliwatts, to be used as a rig for a club net with the NJ QRP club.

NJ QRP Club is an E-mail based club, state wide, and have members from Alaska to Florida. Latest club meeting was in a Food Court at the Forestall Village Mall just above Princeton, with about 30 members and lots of equipment to test, show, and tell about. GCARC has 4 members (maybe more) involved. The web page for the club ([www.njqrp.org](http://www.njqrp.org)), gets plenty of interest world wide.

NJ QRP Club has been in the the design and production of small QRP accessories such as the Rainbow Bridge/Tuner kit for QRP rigs using end fed half wave single wire antennas (40,30 and 20 meters) that can be built into a small candy tin such as Altoids or Whitmans Sampler sold around the holidays.

If QRP low power portable stations are an interest to GCARC members, contact the above website or give me a call for NJQRP Club info.

TNX Ken N2CQ

(Everyone is doing something, so write in and let us know what it is - ed)

---

#### QST DE WIAW

A ham radio package will be aboard the shuttle flight that carries US Senator and astronaut John Glenn into space this fall. Word from NASA this week was that the Shuttle Amateur Radio EXperiment or SAREX payload would be carried on STS-95 when it flies in October carrying the 77-year-old space pioneer into orbit for the first time since the early 1960s, when Glenn became the first US astronaut to orbit the Earth.

Two hams--US Astronaut Scott Parazynski, KC5RSY, and European Space Agency astronaut Pedro Duque, KC5RGG, of Spain--will be among an international crew aboard STS-95. The launch date for the only other SAREX mission scheduled for 1998--STS-93--has slipped from August to December. Glenn already has begun his astronaut training, but it's not yet known if he plans to get his ham ticket before his return to space.

Hams pitched in to help in the aftermath of intense storms and tornadoes in Central Florida that killed more than three dozen and injured hundreds of others. The tornadoes and heavy thunderstorms struck early Monday while most people were asleep, surprising the residents of the affected areas between Daytona Beach and Orlando. Many were left homeless by the storms, now being called the deadliest and most destructive in Florida's recorded history. Weather observers blamed the tornadoes on the El Nino weather system.

ARRL Northern Florida Section Emergency Coordinator Nils Millergren, WA4NDA, said the tornadoes mostly affected Florida's East Central District, while the West Central District--Sumter County in particular--experienced flooding. At least three Red Cross shelters were reported open in the days right after the storms struck. Millergren says amateurs were providing communications for shelters and had put in hundreds of operator-hours in Sumter County alone. Seminole

County ARES/RACES member Allen Wilson, WB7BCI, was among dog-handler hams activated to assist in the search and rescue effort. Other hams were involved in damage assessment and in providing backup communication to relieve already-congested commercial systems. Net operations on 2 meters continued this week, and volunteers still were being solicited in Northern Florida.

Osceola County--the only county in the Southern Florida section affected by the storms--was said to have been hardest hit. Osceola County EC Christopher Hammock, KE4DUJ, spent several days at the county Emergency Operations Center. Osceola has a small ham population. Southern Florida SM Rip Van Winkle, AA4HT, reports hams from outside the county--particularly from Polk County--were helping out. Van Winkle said Osceola ham operations in support of the emergency wrapped up February 26.

Tnx K2JF

---

#### Field Day Ops take note:

Major changes in Field Day rules

Some new rules go into effect this year for Field Day. The popular summertime operating event takes place each year on the fourth full weekend in June. This year, it will be June 27-28.

A major change this year is the elimination of bonus-point credit for packet and VHF/UHF contacts. Field Day stations no longer will be allowed to count contacts via digipeaters, packet nodes, or similar arrangements. Class 2A and higher Field Day stations still may operate a "free" transmitter exclusively for VHF or UHF operation (ie, above 50 MHz) without changing their basic entry classification, but not for bonus points. "It's better than bonus points, and groups are likely to spend more time on VHF and UHF because of that," predicted ARRL Membership Services Manager Chuck Hutchinson, K8CH. As in the past, crossband and repeater contacts other than via satellite do not count for Field Day credit.

Field Day stations now can earn point credit for

digital (ie, non-CW) contacts on each band. The phone, CW, and non-CW digital segments are considered separate "bands" in the Field Day rules. This means, for example, that you now may work the same station for point credit on 40 meters three times: once on SSB, once on CW, and once on RTTY, packet, or one of the TOR modes. SSB contacts count one point, and CW and non-CW digital contacts count 2 points apiece, so adding non-CW digital capability presents a real opportunity to rack up substantial additional points. "We're expecting an interesting year because of the digital modes," Hutchinson said.

The complete, official Field Day rules will appear in the May edition of QST. Basic Field Day rules have remained unchanged for several years now. The new rules undoubtedly will generate a flurry of computerized contest logging program revisions as developers scramble to incorporate the changes into their software.

Tnx K2JF

---



---

### Deadline for Crosstalk

April 24<sup>th</sup> is the cutoff for May's edition of Crosstalk. Contact me either by mail or phone or e-mail at ka2dot@ix.netcom.com.

73's ART

---



---

From the collection of Sonny Gutin, WB2DXB

I am fully aware that many amateurs do not share an interest in the quality of spelling and grammar used in packet radio. I can understand and respect that view. For those who might find the subject interesting, however, I submit the following: Letter symbols used in science and technology are rather rigidly prescribed. Even though many may feel amateur radio is "just a hobby", I believe it enhances our image to appear fluent in the use of the fundamental technical words, phrases and symbols that inhabit this rather technical hobby of ours. Below are listed some basic letter symbols used in the Amateur Service which are commonly misapplied. The real problem seems to be determining correct case. Unless all capital letters are used, case is important. These are not general abbreviations, but unit and quantity symbols. These are the symbols placed after numerical quantities to modify the quantity of and/or

indicate the name of a unit. Abbreviations vary widely, and are not addressed here.

ampere-hour	Ah
baud	Bd
bit (binary digit)	b
bit per second	b/s (also bit/s)
decibel	dB
decibels isotropic	dB <sub>i</sub>
decibels milliwatt	dB <sub>m</sub>
farad	F
giga	G
gigahertz	GHz
hertz	Hz
kilo	k
kilobaud	kBd
kilohertz	kHz
kilowatt	kW
mega	M
megahertz	MHz
milli	m
milliampere	mA
millihenry	mH
millivolt	mV
milliwatt	mW
nano	n
nanosecond	ns
pico	p
picofarad	pF
picohenry	pH
pound(s)	lb
volt	V
voltampere	VA
watt	W

A good source of universally accepted letter symbols is The ARRL Handbook and any of the major amateur radio publications.

F.T. Cosgau

---



---

# April 1998

## GCARC Monthly Planner

Sunday	Monday	Tuesday	Wednesday	Thursday	Friday	Saturday
			1	2	3	4 GCARC 10 Mtr Net 0800 28.350 Mhz
			5 20:00 ARES/RACES 20:30 10 mtr Net 28.350 Mhz	6	7 GCARC General Membership Meeting 1900	8
12 20:00 ARES/RACES 20:30 10 mtr Net 28.350 Mhz	13	14	15	16	17	18 GCARC 10 Mtr Net 0800 28.350 Mhz
19 20:00 ARES/RACES 20:30 10 mtr Net 28.350 Mhz	20	21	22 GCARC Board of Directors Meeting 2000	23	24 Deadline for Crosstalk	25 GCARC 10 Mtr Net 0800 28.350 Mhz
26 20:00 ARES/RACES 20:30 10 mtr Net 28.350 Mhz	27	28	29	30		