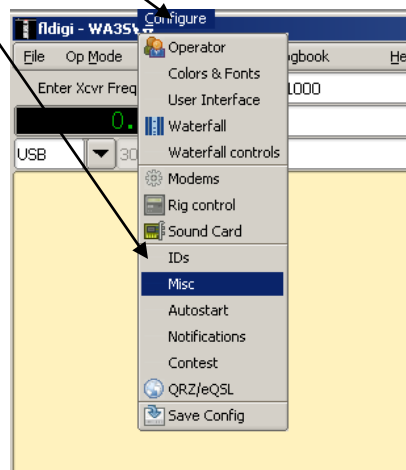


# FLMSG Auto Open Configuration Hand Out Sheet

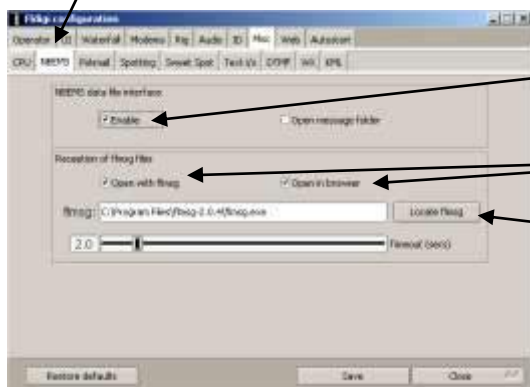
## Configuring FLMSG To Open Automatically In FLDIGI:

It Is Highly Desirable To Have FLMSG Open, Automatically, On The Receive Side Of Sent Messages. To Set Up This Convenient Scenario:

1. In FLDIGI, Click **Configure**, On The **Main Menu**.
2. Scroll Down To **Misc**.



3. On The **fldigi configuration** Screen, Click On The **NBEMS\*** Tab.



4. Click On The **Enable** Box, To Produce A Check Mark.

5. Check **Open with flmsg & Open in browser**, Boxes, As well.

6. Click On The **Locate flmsg** Button.

7. Locate Path & Folder Of The flmsg.exe File.  
(Usually C:\Program Files\flmsg-x.x.x\flmsg.exe)

8. Use The **Locate flmsg executable** Window To Browse The C: Drive & Folders To Locate The File. Left Click To Highlight It.

9. Click On The **Open** button To Place The File In The flmsg Location Window.



**Note: For Macs, follow These Instructions:**

OS X – Open “**Finder**”. Locate the flmsg icon, and right click on it. Select “**Show Package Contents**”. Double click “**Contents**”. Double click on “**MacOS**”. You will be viewing an icon labeled “**flmsg**”. Drag and drop the icon on to the “**flmsg:**” entry box and the value will be correctly entered.

\***Narrow Band Emergency Messaging System**

**For Linux:** The Same Steps As Windows, With Slightly Different Folder Hierarchy.

**For All Systems :** Don't forget to repeat this, if flmsg is updated.