

# FLMSG Auto Hand Out

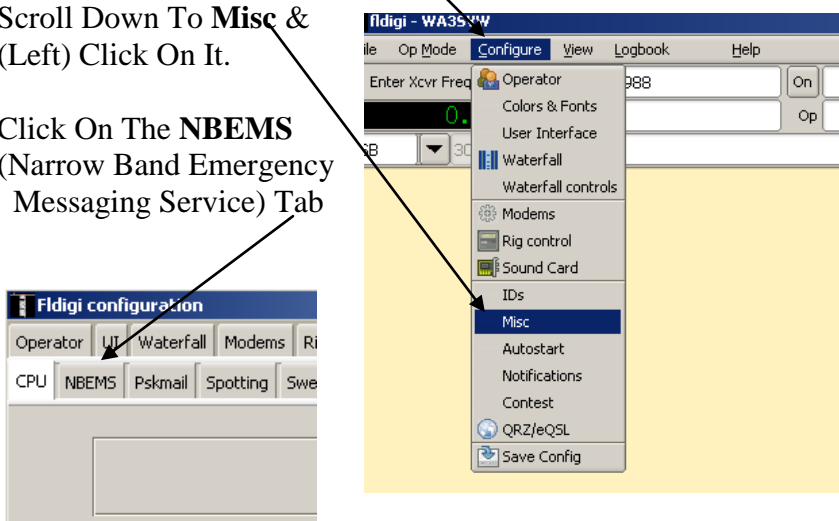
It Is Highly Desirable To Have FLMSG *Automatically* Open, Whenever An ARES/RACES Type Message Is Received. To Set This Up, On A Windows PC (A Separate Sheet Is Available For Mac), Perform The Following Steps:

## Setting Up The Auto Open Function Of FLMSG In FLDIGI:

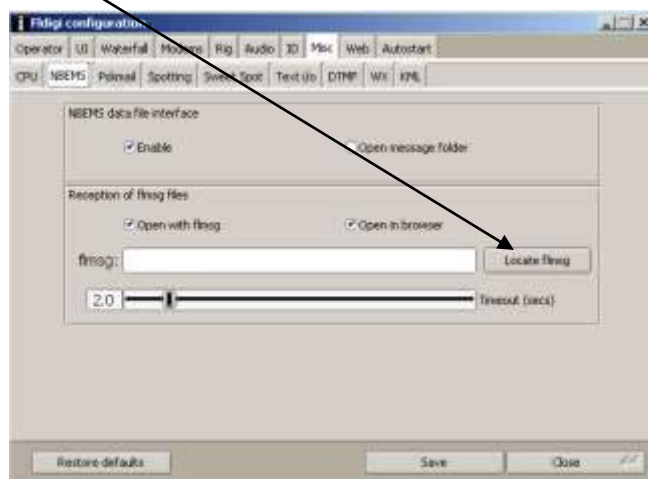
1. In **FLDIGI**, Click On **Configure** On The Menu Bar.

2. Scroll Down To **Misc** & (Left) Click On It.

3. Click On The **NBEMS** (Narrow Band Emergency Messaging Service) Tab

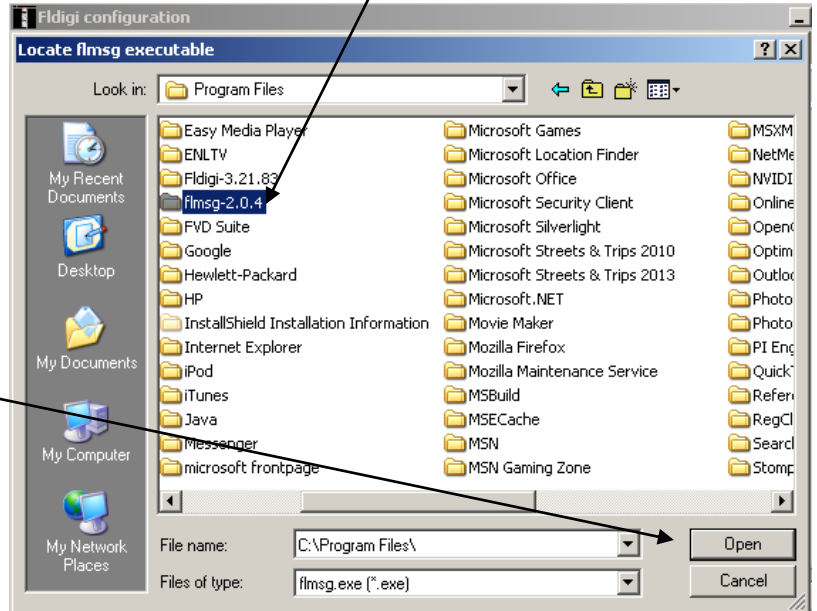
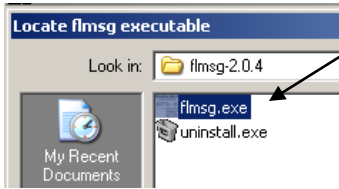


4. Click On The **Locate flmsg** Button



5. Locate The Appropriate Folder(S) That Contain The FLMSG Files  
(Usually C:\Program Files\fldmsg-x.x.x (Current Version Is 2.0.4, At This Printing)  
Double Click On The Folders To Display Their Contents...

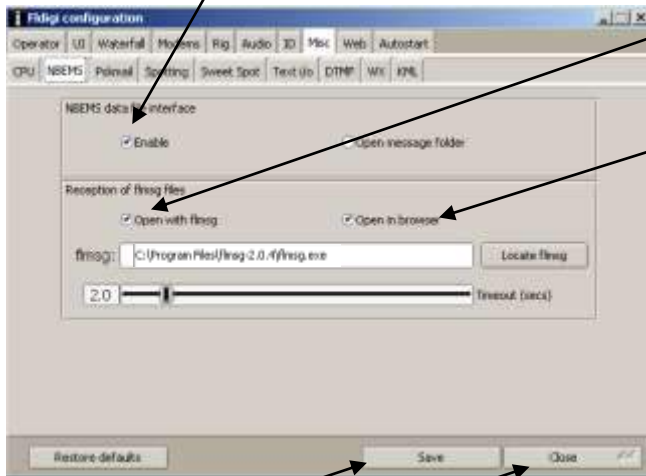
6. Once The fldmsg.exe File Is Located, Click On It To Highlight It.



7. Click On **Open** To Place The File Name And Path In The fldmsg- Window.



5. Be Sure The **Enable** Box Is Checked, As Well As, The **Open with fldmsg** Box, And **Open in browser** Box.



← If Any Of Those 3 Are *Not* Checked, Click In The Box To Check It

5. Click The **Save**, Then **Close** Buttons On The Screen To Exit.

**Note:** Linux Machines Have A Slightly Different Folder & File Structure, However, The Setup Procedure Is Similar To Windows.