

# How to create customized configurations (WSJT-X/FT8)

## How to create customized configurations (WSJT-X/FT8)

November 2017, J. Wright, N2GXJ

### Introduction

WSJT-X is an outstanding software program used for making digital Amateur Radio contacts, including contacts in the new FT8 digital mode. Reference: <http://physics.princeton.edu/pulsar/k1jt/>

Here's a quick "how to", with examples, for configuring WSJT-X for multiple personalized configurations. This is particularly useful, for example, when you have different operators with different callsigns in the same household sharing a computer, each wanting their own customized configuration(s).

To do this, the simple steps are to clone the current configuration, switch to the cloned configuration, and then customize it. Steps to do this are detailed in this paper. To quickly switch between them, you simply use the Configurations menu to select which one you want you want to switch to, and the program automatically restarts into that configuration.

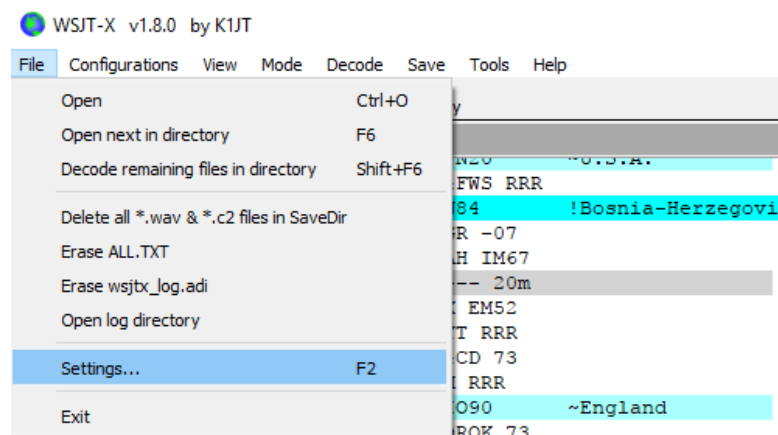
### Details

The "configurations" menu on WSJT-X allows for you to pre-define, and switch between, multiple configurations that you can define and save ahead of time. This can be useful, for example, when there are multiple Amateur Operators that are sharing a computer, and each wants to have pre-defined a settings profile with their callsign, and other settings, that they can easily return to when the user of the program changes.

Here's some screen shots and instructions showing how I created a new profile for a callsign W2MMD, by cloning all the default parameters that I have set up for my use.

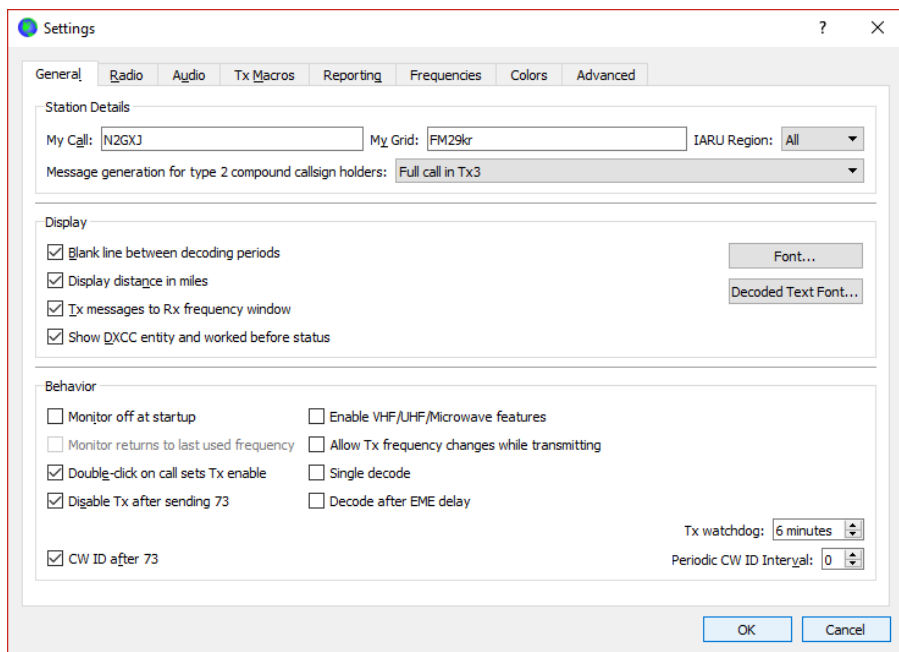
### Check Default Settings

First, start the program, and check all the default settings. Settings are found from the File->Settings pop up menu, as shown here.



For me, from the File->Settings->General\_tab the callsign and other check boxes look like this. In particular, I like these display settings as the default for all of my profiles. You customize them later for each profile you create.

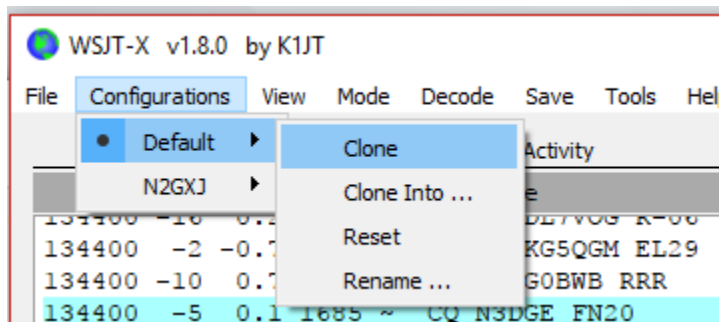
## How to create customized configurations (WSJT-X/FT8)



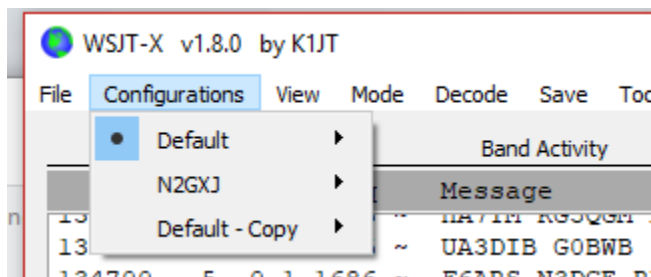
Make all the adjustments you want on the General, Radio, Audio, and other settings tabs, and then press “OK” at bottom of Settings to save them in the default profile. You will have a chance later to customize these in the new profiles you will create from this profile.

### Clone new configuration

Next, check the Configurations menu. There is a “dot” next to the current configuration. From that configuration, “clone” to create a copy of the current configuration, as shown here.

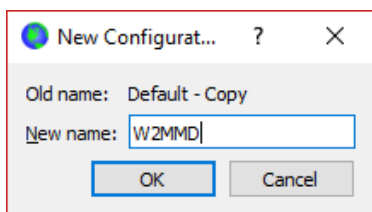
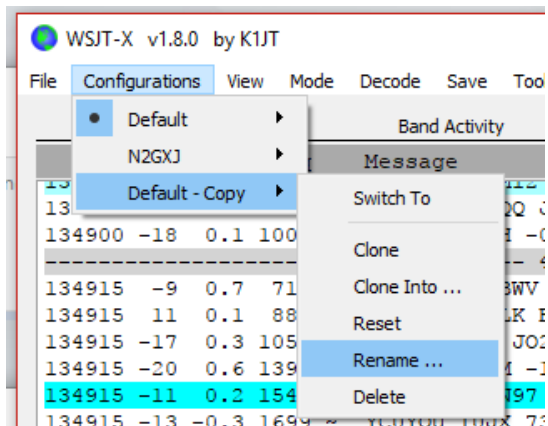


After doing this, you will now end up with something like this when go back to the Configurations menu. Note the new entry, with same name as your current entry, with the text “- copy” added to the name.



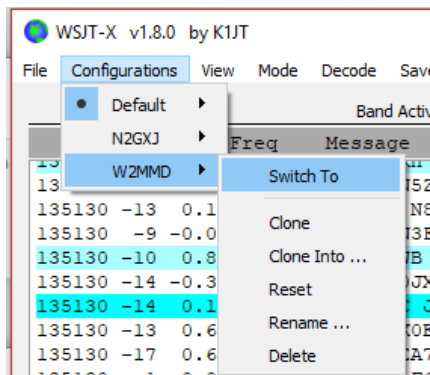
## How to create customized configurations (WSJT-X/FT8)

Select the new clone (copy), and rename it. I am renaming it to W2MMD in this example. Of course, you would rename it to what you wanted to rename it to.

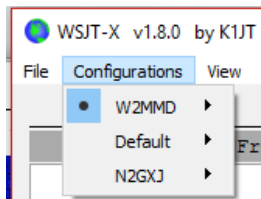


Switch to the new configuration

Next, from the same Configurations drop down, switch to this new configuration.



The result of switching to it should result in a quick restart of the software program. Then when look at the Configurations after this quick restart, you should see the "dot" is now next to your switched to configuration on the Configurations choices.

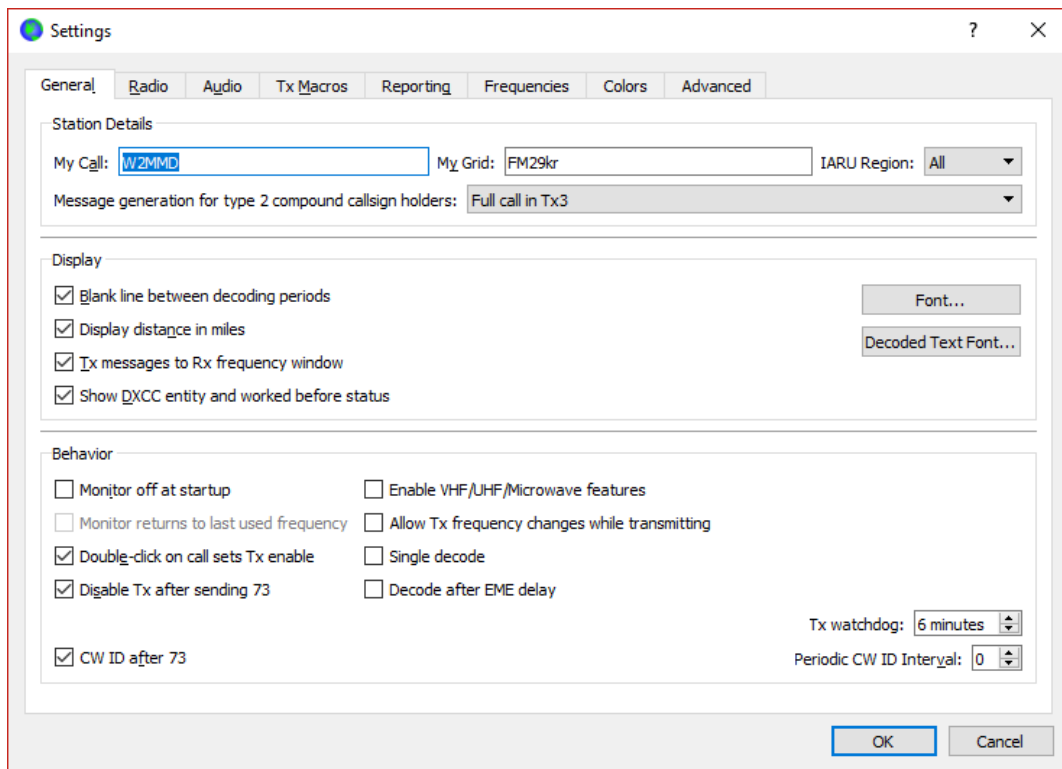


While running in the newly cloned and renamed configuration, next we will customize it

## How to create customized configurations (WSJT-X/FT8)

### Customize current configuration

Next, we customize this cloned configuration that we have switched to. In this case, we need to go back to the file-settings menu, and change the callsign to be W2MMD, and then save that by pressing the OK after updating the callsign on the File->Settings-General\_tab.



That's it!

Create other customized configurations like this, and then “switch to” whichever one you want when you want to quickly change users, or operate with different settings you have defined and named as different Configurations.

Hope you find this helpful!

Jim, N2GXJ