

CROSSTALK
PUBLISHED BY AND FOR THE

* GLOUCESTER COUNTY AMATEUR RADIO CLUB-W2MMD *

*

1980

G.C.A.R.C. OFFICERS

PRESIDENT	ROSE ELLEN BILLS - N2RE
VICE PRESIDENT	CHUCK COLABRESE - WA2TML
TREASURER	FRED COWGILL - WB2GEK
RECORDING SECT.	ROSLYN MARDER - N2AKL
CORRESPONDENCE SECT.	STEVE SASSON - WBIAOF

*

DIRECTORS

TRUSTEES

JOSH BREHM	AE2L	RAY MARTIN	WB2LNR
DAVE BACON	KB2GJ	CHICK NAYLOR	WA2USI
SONNY GUTIN	WA2DXB		
TOM WIDENER	WA2OOL		
JOHN FISHER	K2JF		
BOB GRIMER	KN2QWO		

*

COMMETTEE CHAIRMAN

Program:	Chuck Colabrese-WA2TML	A.R.E.S.:	Harry MaCormick-WA2SEA
Awards:	Bill Bachman - WA2VEE	Technical:	Bill Frambes-WB2FJE
Training:	Chick Naylor-WA2USII	D.X.	Wayne Wood-W2SUA
Membership:	John Fisher-K2JF	Publicity:	Sonny Gutin-WB2DXB
Contest;	Ken Newman-N2CQ	House;	Bob Ruple-WA2MMA
Ham Fest:	Bob Grimmer-KN2QWO	Historian:	Della Parker-W2AFZ
Field Day Chairman-	Mark Wilson-AA2Z	and Co-Chairman -	Jack Kessel - AB2W

*

CLUB NETS

10 Meter RTTY Thursday 8:00 PM-28.100 Mhz. 2 Meter FM Sunday 8:00 PM - 78/18(147)

*

The reguler meeting of the GCARC, is the second wednesday of each month at the National park Municipal Hall, National Park, N.J. Meeting time is 8:00 PM .

*

Send all articles to be printed in Crosstalk to Jack Kessel/AB2W,

PRESIDENT'S CORNER

Our next meeting will be the first Wednesday of March as that is the only available night for our meeting place, GRENLOCH FIRE HALL off Black Horse Pike. Directions will be found elsewhere in this issue. The time will be the same - 7:30 sharp.

Chuck has a nice program for us . I'm sure you will want to see it. 7JIRL, the JA DXpadition to Okino Tori-Shima. In color and sound. Sounds like a grate program. just cannot thank everyone for being so helpful during these critical times of finding a meeting place. A great job to you all. Remember March is the last chance to pay \$7.50 for your dues. After this month you will have to pay \$9.00 so be prepared to take care of this whin you come to the meeting. The next Board of Director's meeting will be held at the home of Chuck Colabrese, Wednesday March 19th at 7:30 PM. See you March 5th for our March general meeting.

DE Rose Ellen/N2RE

SINGLE SIDEBAND ONLY ?

I think it would be a good idea for everyone to read page 73, center page of this months GST. The club's committee, should start thing about comments for the up-coming ruel makèng.

It is realy beyond me ,how most Hams can sit back and not do anything to help protect the wonderfull hobby that they enjoy. I hear talk about the new rigs, the new antennas, WAS, DXCC, and the hours of study for the next test that is coming up. But i have yet to hear anyone say ; I spent 30 minutes today to wright the FCC on a Notice of proposed Rulemaking.

It's your hobby and what happens to it is up to you.

DE AB2W

FOR \$ale : Heath HW-101 with P/S and SB600 speaker and DI04 mic. w/pre amp.
Carman/WA2TRS. \$300

For \$ale : Kennwood Twins, one year old. \$750. Jack/AB2W after 5:00.

Heard Island; March 10th three hours a day for 10 days (list Oper.)

Burma; XZ0UT, 15 april to 15 June on 21 MHz.

Christmas Island; 12 to 26 March VK9XT, QSL via WA3HBC.

Oman; A4XGY, 21.345MHz Sundays at 1700Z

Upper Volta XT2AW, daily on 14.215 from 2000Z.

(DE Long Island DX Bulletin.)

CONSTRUCTION PROJECT

Build a SCA Adapter using five dollars of parts that works on the spot. Before I get into the building of the adapter I would like to say what is SCA all about.

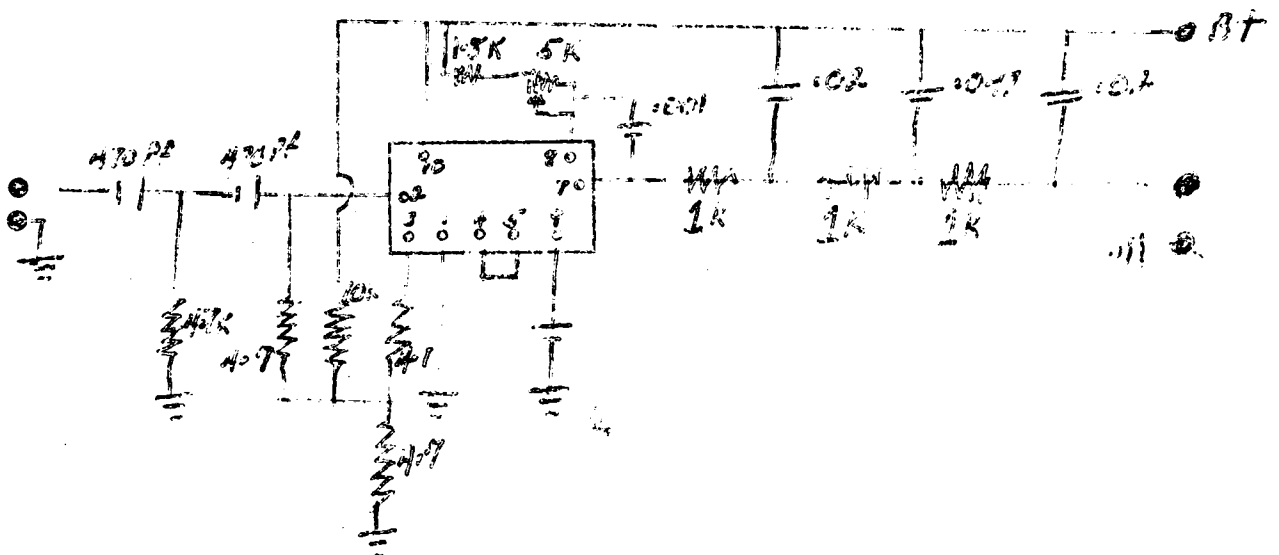
SCA stands for subsidiary communication authorization and is used for the transmissino of back ground music and a lot of very interestion transmissions. The standards used in SCA are 67Khz and 72 Khz and they are a part of the FM signal which is transmitted on a local station. In this area there are only six of these stations and they are listed below.

WRTI	90.1	9:00AM - 11:00 AM	7:00PM - 10:00PM
This station has	RTTY 60 WPM - shift,	1400Z - 1800Z	news and weather.
WUHY	91	News and weather	for the blind.
WWDB	96	Music	
WUSI	99	Music same as WWDB	but on 72Khz.
WJQG	102	P.D.R. 72 Khz	24 hour medical news
WIBF	103.7	ASSC-II	transmission content known

The adapter is easily hooked up. The input side of it is hooked up to the multi-plexer input coming to the F.M. detector of your receiver and the output of the SCA adapter goes to your preamp, Input. As for the voltage of the adapter it works on 9-12 volts at 5 mill amps, the size of it can be built on pc 2" X 2".

Warning: This SCA adapter can be only used for home use and is illegal for commercial use without written permission from the broadcaster.

Good luck, DE WA2MMA/Bob



PRPPAGATION FORECAST
MARCH 1980

Since we are now meeting on the 1st Wednesday of each month, and Crosstalk will be coming out for the first week of the month, the Propagation Forecast will be revised and started for the month at the First instead of the 15 to the 15th as it has been.

For March's band plan of day and time operation see Last Month' Crosstalk.

V.H.F. Good Days: 1-3, 8-10*, 11 18-21*, 27

U.H.F. Good Days: 4, 10*, 14, 21*

Extra Good Days: *

You may notice a change in the March days from last month. I was able to "fine-tune" the days now that the data is closer to the actual days.

You fellows will have to bear with me for a couple of months until this new disturbance makes up its mind. The Sun-spot configuration is going thru a change from a two-sector to a four-sector configuration. This means that we may have two active and two quiet periods during each solar rotation, every 27 days. Just when they will occur can be worked out but not until more data is collected over a finite period of time; so bear with me.

During March the MUF will start declining, so expect less openings during the afternoon to the Southern hemisphere. Good DX on 10 during the day and 15 will extend further into the evening since the days are getting longer. This means 15 will start at sunrise and continue to well after sunset. For around the clock operation keep your ears listening on 20; and , 40 for nighttime DX will be good while 80 will start to deteriorate very quickly after the 15th. Forget 160, too much QRN.

We keep hearing our DX men talk about how good 20, 15, or 10 is for DX. Let us not forget the lower bands. 80 meters is a fine band for DX; however, there are some very interesting propagation conditions that must be taken into consideration when working this band. It can only be worked at night. During the Daytime, the D layer at an altitude of 64 to 96KM is the lowest layer in existence and signals that arrive at the D layer from low angles are absorbed. The absorption level which is inversely proportional to the arrival angles of signals, permits high-angle signals (20-15-10-6) to pass through relatively unattenuated. The D layer disappears completely during the night. Another problem is the aurora mechanism. During a solar storm clouds of charged particles are thrown off by the sun; these clouds can reach the earth 26 hours after the storm. As 80 meters propagation goes, this heavily ionized aurora layer; at a height of 95-110KM acts similar to the D layer in its existence during the day, it absorbs all signals going through the belt and will knock out all "over-the-pole" and signals going into the northern latitudes. (this also holds true for the "Boys down-under only the South Pole). The Equinox Period (15 February to 15 April). During this period the ionospheric situations are fairly similar to both the Northern and Southern hemispheres; similar MUF values, days and nights approximately 12 hours long on both sides, reduced QRN, etc. This is the ideal season for transequatorial propagation especially the NW-SE and the NE-SW paths (example: Europe-New Zealand and San Francisco-Indian Ocean). It is not true (as many think) that DX on 80 meters can only be worked during the winter. The equinox period is very good for long-haul transequatorial propagation. One other special propagation condition that is very good for 80 meters DX is the GRAY LINE. The Gray Line zone is a zone centered around

the terminator. Some other time if interest is shown the Gray line will be dealt with in more detail. (YSTIARFI).

Ray (WB2LNR) and Bob (WA2MMA) , we better start getting ourselves ready for sporadic-E. It will start toward the end of March.

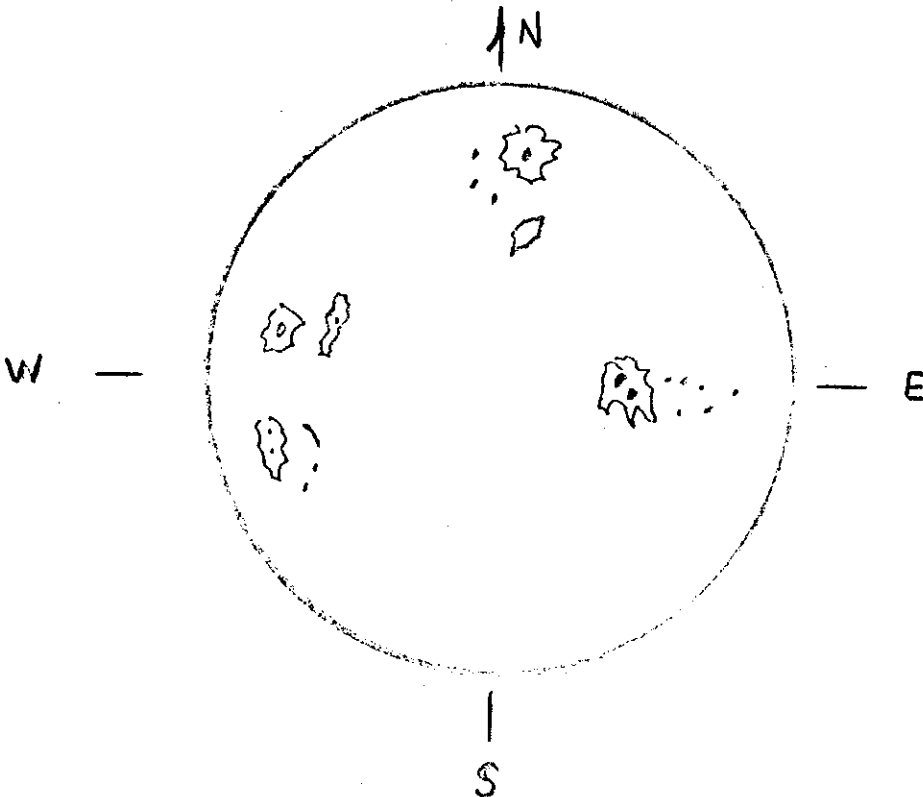
Well that is it for this month, Good Luck, Good operating, Hope you all make out well in the contests.

73
John

John

K2JF

"Budget: a mathematical confirmation of your suspicions." A. Latimer.



The SUN with all her Spots as she looked at 1230 PM Pitman time on February 21, 1980 Awful looking isn't it. No wonder we are haveing such good DX, and to think they are getting smaller. Looks like we went through Max. in November. Will know better later on.

WORDED ALL MEMBERS AWARD GCARC

The Worked all Members Award is a certificate with proper endorsements, which is available to members of GCARC who have submitted proof of working on the air at least 15 members of the club. It is also available to non-members of the club who submit proof of working at least 10 members. There is no charge for this award.

Proof of having had on-the-air contact with club members shall be a list showing the following details of each contact.

Date, Time, Call of station worded, Name of operator (first and last) at station worked, Frequency, Mode and Power used.

The committee will accept written lists or photocopies of actual logs.

The list must clearly show the name and address and call of the person applying for the award. The certificate is presented when the first 15 members are worded and seals are provided to be added to the certificate for 30, 50 and for each 10 members worded beginning with 60. The committee retains the lists submitted so as you word additional members, it is only necessary to submit additional lists of proof. According to the files in the committee's possession, the following active club members have won the following certificates and have credit; for the total stations worded as shown.

<u>Award No.</u>	<u>Call</u>	<u>No. Worded</u>	<u>Award No.</u>	<u>Call</u>	<u>No. Worked</u>
?	W2LVW	50	14	WA2SEA	100
25	K3WIN	18	30	WA2VEE	110
33	WA2NPD	80	65	WA4BMC	12
70	WB2FJE	52	71	N2CG	16
73	N2SI	31	74	N2RE	16
78	WA2MEM	30	87	WA2AXJ	30
88	A12B	100	89	WA2OMY	15
90	W2TDS	16	91	AA2Z	30
93	WB2LNR	107	94	AE2L	80
95	WA2PFC	84	96	W2KI	15
97	AE2V	70	98	WB2JMK	32
99	WB2VFJ	37	100-	WB2VFX	15
101	K2HPV	50			

Dust off your equipment and your logs and get crackin for this free award. Check through your past logs and start your list now. Submit your lists to;

Herb Schuler/K2HPV

Or hand the logs to me at the club meetings. I'm sure some of you have enough club contacts in your logs right now, you just haven't made up the list yet. Remember, if you worked someone ten years ago and he or she was a member when you worked them, they need not be a member now.

KEN'S CONTEST CORNER

SUM UP-COMEING CONTESTS

March 29 - 30, WPX-PHONE. Postmark deadline is May 1st, be sure to have logs in.
May 24-25, WPX-CW. If you were in the ARRL DX Test be sure to have
your logs to Ken by April 2nd. deadline for mailing.

All the above count for Megapoint award. The contests are almost gone for this year
so jump in and get your totals up.

Poor conditions in the CW weekend of the ARRL DX Contest made for scores generally
lower than last year.

The new rules probaly helped lower the U.S. scores and inflate the European Totals.
I for one intend to push for the repeal of the rule which allows DX to DX QSO's
in the contest. Eighty meters sounded like a European Sweepstakes at times. Let
the League know how you felt about the new format by attaching a note to your log.
Don't forget to turn in all logs for the DX Test at the march meeting. Note the above
postmark deadline if you mail seperately. Don't forget to let me know your score for
the Megapoint credit.

DE N2CG/Ken

1979 ARRL SWEEPSTAKES RESULTS

<u>CALL</u>	<u>MODE</u>	<u>QSO's</u>	<u>SECTIONS</u>	<u>SCORE</u>	<u>PWR.</u>	<u>HRS.</u>
W2KI	SSB	1168	74	172,864 *	B	24
N2CG	CW	1001	74	148,148 **	B	24
W2KI	CW	902	73	131,692	B	24
W2SUA(op AA2Z)	CW	878	74	129,994	B	24
AA2Z	SSB	832	74	123,136	B	18
N2CG	SSB	827	74	122,396	B	16
WA2NPD	SSB	532	70	74,480	B	14
W2YC &	CW	363	70	50,820	B	11
WA3KRL - WA2LGT						
K2HPV	CW	408	62	50,592	A	21
W2YC	SSB	333	71	47,286	B	12
N2BCF & K2NH	CW	291	65	37,830	A	23
N2BCF	SSB	233	63	29,358	A	20
WA2PND	CW	230	59	27,140	A	12
K2JF	SSB	200	67	26,800	A	13
K2HPV	SSB	163	58	18,908	B	8
K2JF	CW	150	59	17,100	A	15

* Breaks club record (phone) ** Breaks club and SNJ Section record (CW).

DE N2CG

