

CROSSTALK
PUBLISHED BY AND FOR THE
GLOUCESTER COUNTY AMATEUR RADIO CLUB
an ARRL affiliated club
(W2MMD)

G.C.A.R.C. OFFICERS

PRESIDENT	RAY METZGER	WB2BZY
VICE PRESIDENT	RAY MARTIN	WB2LNR
TREASURER	ROSE ELLEN BILLS	N2RE
RECORDING SECT.	STEVE BLASKO	W2TDS
CORRESPONDENCE SECT.	MARY PETRUZZI	AE2Y

DIRECTORS

BILL BACHMAN	WA2VEE
DAVID BACON	WB2ONW
BILL HELMETAG	WA2VQG
GARY HITCHNER	WA2OMY
JACK KESSEL	AB2W
MARK WILLSON	AA2Z

TRUSTEES

BARRY CAMPBELL	W2YZ
BILL FRAMBES	WB2FJE
JOHN KULL	WB2GKH
JACK WHITE	WA2MEM

THE REGULER MEETING OF THE G.C.A.R.C. IS THE FIRST WEDNESDAY OF EACH MONTH AT THE NATIONAL PARK MUNICIPAL HALL, NATIONAL PARK, N.J. THE MEETING STARTS AT 8:00 PM. ALL HAMS AND GUESTS ARE INVITED TO ATEND.

Club nets:

2	Meter FM	78/18	Sunday	8:00 PM
6	Meter AM	50.9	Sunday	9:00 PM
10	Meter SSB	28.8	Friday	9:30 PM
15	Meter CW	21.175	Friday	7:30 PM
80	Meters CW	3.680	Anytime	just call.

Lets try to help support our nets. Try to check into two nets a week and invite someone outside the club to join in the fun.

Send all articles to be printed in CROSSTALK to Jack Kessel/AB2W;

The cutoff date for articles for next months CROSSTALK, can be found elsewhere in this issue.

Crosstalk is published monthly, and is available to other clubs on a exchange bais. Information may be reprinted if credit is given to the G.C.A.R.C. The opinions in the editorial section are those of the editor and do not necessarily reflect the views of the Gloucester County Amateur Radio Club. Any opinions to editorials will be printed, if sent to the editor.

— PRESIDENT'S CORNER —

Hi, I hope everyone who attended the banquet enjoyed themselves, I know that I did. The food was delicious and plentiful. All I can say is, those who missed it sure missed out on a great night out. There were no long speeches to listen to or all radio talk. It was a night of talking with other club members and their wives. Just a real get together. Then the slide show put the finishing touches on the evening. I am already looking forward to the next one. Well I hope to see you at the november meeting.

RAY - WB2BZY

DIRECTORS MEETING

Oct. 18, 1978

The October meeting came to order at 8:15 , and in attendance was Ray WB2BzY, Ray/WB2LNR Steve/W2TDS, Rose/N2RE, Mary/AE2Y, Bill/WA2VQG, Gary/WA2OMY, Bill/WA2VEE Dave/WB2ONW, Mark/AA2Zand Jack/AB2W.

CONGRATULATIONS TO THE NEW MEMBERS voted in to the club:

- Vince Ferfaro - N3AGU
- Bill Conwell - K2PO
- Herman Friend- WA2SID
- Raymond Falt - WB2VGG
- Stan Christman- KB2DW

WELCOME TO THE GCARC.

A motion brought to the floor by Ray Martin/WB2Lnr to have a family membership rate, was well accepted but will not be voted on until next year, because of the budget having been passed already. Bill /WA2VQG said that the officers of the club should have a years free membership. I don't think this has much of a chance of passing, from the reactions.

Usually there would be enough to fill a page from a Directors meeting but this month there was really not too much to go over. When ever there is something to report it will be in Crosstalk.

ATTENUATOR -- One more than a Nine-U-Ator

QSL MANAGERS ? ? ? ?

If you have trouble getting the name of a qsl manager, You might want to try this way of going about it: A computerized listing of over 1400 Stateside QSL managers. Updated weekly. Send \$1.00 plus 41¢ postage to Gary Yarus, WB0MSZ, Sounds like a good dollars worth.....

FCC'S AMATEUR EXAM Study Guides outline what's needed to pass each class of Amateur license test. They are excellent references for those preparing to become Amateurs or to upgrade. The guides are available on request from any FCC Field Office.

HR REPORT

1979 BUDGET COMMITTEE REPORT

GLOUCESTER COUNTY AMATEUR RADIO CLUB

As a result of the Budget Committee's meeting on September 27, 1978, the following is recommended for the coming year:

EXPENSES		INCOME	
Crosstalk		Dues	\$930.00
Postage	\$300.00	Drawings	50.00
Paper	100.00	Misc. Income	20.00
Repaire/ Supplies	90.00		
Crosstalk Total	\$490.00		
Field Day	250.00		
Prizes	50.00		
Programs	100.00		
ARES Subsidy	10.00		
Misc. Expenses	50.00		
Insurance	50.00		
TOTAL EXPENSES	<u>\$1,000.00</u>	TOTAL INCOME	<u>\$1,000.00</u>

Miscellaneous expenses include such items as Callbooks, prizes, etc. Miscellaneous income include money from QSL cards, patches, QST renewals, etc.

- (1) Our insurance policy is payable every three years at the rate of \$92.00 for that period of coverage.
- (2) At year end, one-half of the balance in the check book will be deposited in our Savings Account.
- (3) Dues remain: Full Member - \$9.00 payable at the rate of \$.75 per month with the proviso that the payment of \$7.50 - if paid during the months of January, February, or March will be considered as payment in full for the fiscal year.
- (4) Associate Member - \$6.00, payable at the rate of \$.50 per month. Payment of \$5.00 if made during January, February, or March. The initiation fee shall be \$1.00.

Respectfully submitted,

Rose Ellen Bills, Chairman & Treasurer
 Ray Metzger
 Josh Brehm
 Mark Wilson
 Bill Bachman
 Jack Kessel

/reb

P.S. THE TREASURER MUST HAVE YOUR RECEIPT OF MONEY SPENT BEFORE A GCARC CHECK WILL BE ISSUED.

Amateur Radio is challenging, stimulating, rewarding, exciting, dramatic, fulfilling and dynamic. It's really something special. For those on WCARS, Western Public Service System, IMRA, The eye Bank Net, MARCO and the like. They are active in an action oriented, useful way. They are on the cutting edge of reality. How much greater their satisfaction than someone who parks his car and gives out two-by-two's from three counties at once. We have RACES, but how few participate in it ?

During the Los Angeles earthquake we found out again just how important Amateur Radio can be. But only a fraction of us actually participate in the actions that preserve our frequencies. (Under the communications Act the Amateur Radio Service exists because of its value to the community and nation for emergency communications.)

A few years ago at the Southwestern Division Convention I had dinner with someone the old timers will remember, W5NW, Soupy Groves. He told me about the contacts he made in 1924 with VKs and ZLs, on 80 meters running five watts, a two tube receiver and a wire antenna. So when we get all excited about the fact we can, with today's sophisticated high power gear, fling a signal somewhere, we should think of soupy's adventures 54 years ago and put things in perspective.

It's about time we concerned ourselves more with what we do with it than the mere fact that we can do it. The bureaucrats who will decide our fate at WARC well know how radio works!! What they want to know is how are we justifying our occupancy of the spectrum space. We must increase its stature in our own minds and of the officials.

from WORLDRADIO

The above was a short part of an article from WORLDRADIO by N6WR. After reading it I had to stop and ask myself; What have I done for Ham Radio ? Not to much I'm afraid. I know that if I took just a small portion of the time I spend loafing for new DX countries and Ragchewing that I would have time to devote to the thing that makes the Amateur Radio Service exist. That being, taking part in one of the many Public Service Nets that are on the air. I think it would be good for all who use the the Amateur Bands and enjoy them as much as I do to stop and ~~think~~ think how much time you could spend helping others, on a Public Service Net.

I think that it would be a very good program to have our SCM, or someone who knows a lot about Nets, to come and tell us what nets are on the air, and how to join them.

In closing something from the same article..... If you don't think that is important, in a couple of years when you go to I4.205 and find Radio Botswana instead of Clipperton, maybe we'll get the point. (Get the point ?)

AB2W

QRZ QRZ QRZ QRZ QRZ QRZ QRZ QRZ QRZ QRZ QRZ QRZ QRZ QRZ QRZ QRZ

How many have tuned across the band and heard someone saying qrz, qrz, is the frequency in use ? Maybe you have done this yourself. If you are in the habit of doing this, it is not the correct way of seeing if the freq. is in use. What you are saying is, who is calling me? who is calling me, is the freq. in use...? Now if you are tuning across the band and hear a JT I ** calling your call but don't get all of his call, then you would say QrZ WA2*** ! Or if you call CQ and you can't make out who is trying to get back to you, because of QRM there again you would use QRZ...

If you want to know if a freq. is in use, simply ask, (IS THE FREQ. IN USE ?) You should always do this even if you can't hear anyone. There can be a QSO going on and you can't hear the guy or doll on the other end. On CW, the accepted Q-Signal is, QRL. Send QRL followed by a question mark?----If you hear QRL come back, It means the freq. is in use. Q Signals have two meanings to them, it all depends if you use the the question mark or not. Without the question mark it is in the affirmative...

Q signals are used mostly on CW, but can help on SSB when the language barrier is too much of a problem. On CW it solves a lot of sending when a Q signal will say it for you. So don't get in bad habits and try for good operating procedures....

AB2W

— OVERVOLTAGE PROTECTIVE CIRCUIT —

By William F. Griana, WB3HOZ

In my research for technical information for the newsletter, I came across an article in a popular magazine concerning an overvoltage protective circuit or regulated power supplies used to power mobile rigs in the house. A component failure in the regulatory section of the power supply may well raise the output voltage above the 13 volts the nominal voltage design of mobile rigs.

When this happens, an expensive repair bill, well the circuit shown in figure 1 - will give you the protection you need to avoid an overvoltage catastrophe.

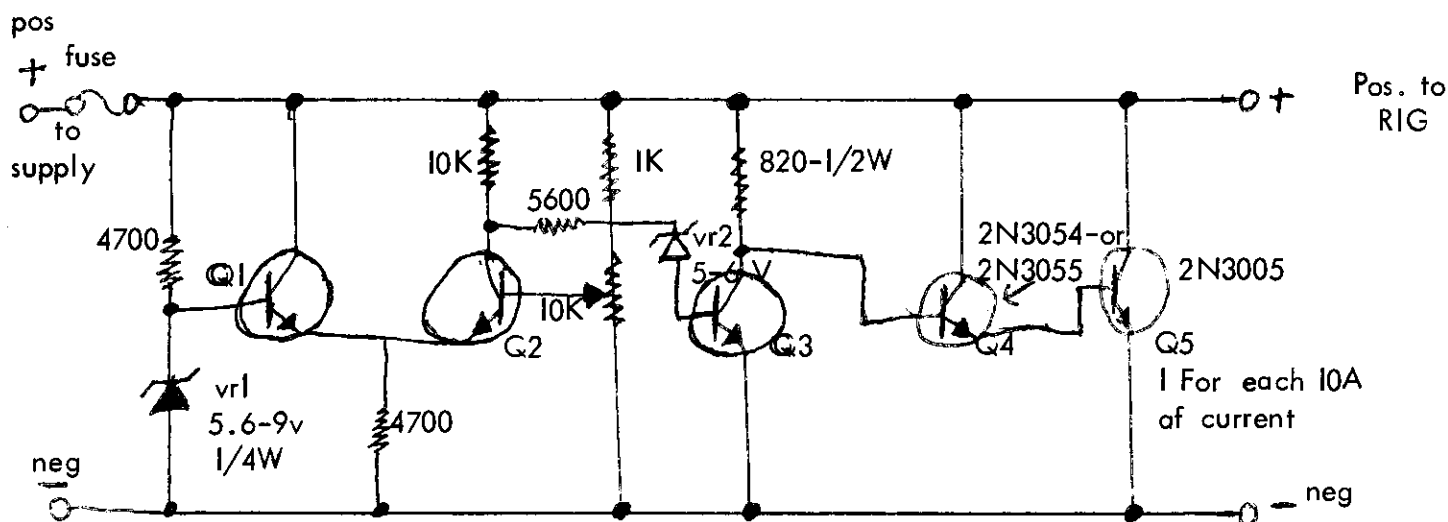
With the values shown in the figure 1, the dump voltage may be set anywhere from 7 to 30 volts, within 1/2 volt of the desired trip voltage. The circuit will work on supplies capable of delivering 30-amperes, Essentially there is no "bleed" current through the power transistors and only about 20-ma, in the control circuit.

VR-1 and the 4700-ohm resistor provide a stable reference voltage for the base of Q-1, which is one-half of a differential amplifier. The 1K resistor and the 10K pot sense the voltage level and feed a portion of it to the base of Q2, where it is compared to the reference voltage. Q2's collector voltage shifts from 5 to 9 volts, depending upon the setting of the pot. This 4-volt change is coupled to the base of Q-3 through the 5600-ohm current-limiting resistor and the second zener, which is used to get rid of the 5-volt offset coming in from Q-2's collector. With this arrangement Q3's collector will go suddenly from 0 to 13 volts. Until it is tied to the base of Q-4.

With Q3's collector low, Q4 and Q5 are just quietly sitting there waiting for some forward bias. When Q3's collector swings high, Q4 and Q5 (in a Darlington pair) are driven into hard conduction. Since Q5 is connected across the power supply, the fuse blows. Until it blows the fuse, the voltage across Q5 is clamped very close to the value determined by the setting of the pot. Additional 2N3055's should be paralleled with Q5 for each additional 10 amps of fuse rating. Since Q5 is turned on only long enough to blow the fuse, there is no need to put it on a heat sink. The layout is not critical and neither are most of the parts values, but try to stay within 20% of the listed values if you want it to work as well as possible.

Initial setup of it is fairly simple. Connect a voltmeter across the power supply. Replace the fuse with a 12-volt 150-ma lamp. If the power supply is fairly adjustable, set it for about 14-1/2 to 15-1/2 volts. Adjust the 10K pot until the light snaps on. Slowly back the supply voltage and note the point at which the lamp goes off. This should be within 1/2 volt of the desired trip point. The circuit will cost around 6.00 or \$7.00.

submitted by Ed - WA2PFC



PROPAGATION FORECAST NOVEMBER 1978
ALL TIMES EST

If you missed all the great openings during the month of October shame on you; but, being the nice guy that I am here is another chance. As a matter of fact as the song goes, "things are getting better all the time."

This month will show excellent conditions for F-2 opening on 6 meters. Good transoceanic to Europe is a very good bet. If you don't like East-West, OK, try South. South America looks good. When? Just before noon through the late afternoon; oh say, 1130-1630. When the F-2 is open the signals will be strong.

For you MHF contest fellows, the ARRL Phone SS looks good to fair. The 18th will be High Normal the 19th going into low normal. If the A index stays between 2-3 and the Solar Flux up around 120, a very good week-end. For the CQ WW DX contest, it is going to be a "giant-killer." Especially on the 25th, an above normal condition. All in all a good crack at some records should be made during these contests, so teams, let's go. Hope you all did well in the Oct. CQ DX Phone contest. Please let me know how you think propagation conditions were. It helps you know. "FEED BACK".

1.8 MHz.	EUROPE AFRICA CARRIBBEAN S. PACIFIC	1800-0200 1900-0000 1900-0300 0300-0500	
3.5 - 4.0	EUROPE USSR MIDDLE EAST SO. AMR. CARIB. SO. PACIFIC AUSTRALIA ASIA	1800-0500 1900-2300 2000-0100 1900-0500 0300-0700 0500-0700	Beam heading 275°
7.0 - 7.3 MHz.	Same as 3.5 - 4.0, but start at sunset move all time up one hour and stay one hour longer. FAR EAST ANTARTICA	0500-0700 0400-0600	
14.0 - 14.3 MHz	EUROPE USSR MID EAST AFRICA CARIB. SO. AMER. SO. PACIFIC AUSTRALIA ASIA ANTARCTIC	Start at Sunrise and last all day and most of the evening. 0700-1300 1300-1900 1500-2300 Not too good from midnight to Sunrise rest of time good. 2200-0200 0700-0100 again 2100-2300 2100-0200	

cont. on next page

BROADBAND - An all-girl orchestra

Prapagation forecast cont:

21.0 - 21.45

EUROPE	0800-1200
USSR	0800-1100
MIDDLE EAST	0900-1200
AFRICA - SO. AFRICA	1200-1700
CARIB. SO. AMER	0800-1800
SO. ASIA	0800-1000
SO. PACIFIC	1700-1900
AUSTRALIA ASIA	1700-1900

This is the best daytime DX band with normally strong signals.

28.0 - 29.5 Herb take some vacation days for this month for this band.

EUROPE	0900-1600
USSR	1000-1200
MIDDLE EAST	0800-1000
AFRICA	1200-1500 (peak 1300)
SO. PACIFIC	1300-1500
CARIB-SO. AMER.	0800-1800

West coast of USA any time after 1000 and strong.
The mid European signals will be very strong, with Germany and Austria being the stronger.

Well there it is, just about a day to day, so here are the days.

MHF - GOOD DAYS ----- 2, 12, 14, 15, 18, 24 and 25....
Poor Days ----- 8, 20, 22, 27 and 28. stay in bed.
on the 21st. anything can happen day.

Again, please check 28.888 MHz for the Propagation Beacon. This study will benfit us all the Unit is running is 7 watts and is being handled by W6IRT and myself. Need signal strength, Date, Time, Receiver type, Antenna type, antenna hight above ground and temperature if passible, plus type of day, Sunny, cool, Cold, Overcast.....etc...

GOOD LUCK, K2JF

A GOOD PLACE TO EAT: If your ever in Franklinville, and want a supper meal stop in at 'BEAUTY and the BEAST". They go all out to make sure that you dan't ga away hungary. They are open for breakfast and lunch only. If you like BIG, BIG meals this is the place. -AB2W- (next to franklinville inn)

If you know of a good place to eat or to have a good night out, then let me know so I can pass it along to the others in the club. How about that ather hobby that you have? We would like ta hr about it.. I use ta have a I-GASER, Hot-rods anyone ??? Keep the cards and letters cameing in.
-AB2W-

LES BELLES

This month we are going to talk about RICE. Rice is one of the oldest foods known to us and goes back before history was recorded. For many years the thrifty housewife used rice as the ideal extender for casseroles and her main dishes. No wonder -- rice combines well with small amounts of meat or poultry for all of us who are budget minded. Rice can also be easily prepared and is a very good substitute for potatoes. Every last ounce is edible and no waste as we have in many of our foods.

For the modern day cook -- Rice no longer requires washing when it comes from the package. Rice contains some calcium, iron and the B-complex vitamins and may be kept hot and fluffy in a covered dish in a low heated oven. RICE can be cooked in chicken or beef broth for that distinct flavor, rather than water.

Here's something you can try. Where did I get the recipes -- well I see many from the Far-East in the course of my working hours -- However, I remember most easily the recipes learned from my mother.

OLD FASHIONED RICE PUDDING

- | | |
|-----------------------|----------------------------|
| 1/2 cup uncooked rice | 1/2 teaspoon ground nutmeg |
| 1/2 cup sugar | 2 quarts milk |
| 1/2 teaspoon salt | 3/4 cup raisins (optional) |

Mix rice, sugar, and nutmeg in a shallow 2-1/2 quart baking dish. Add 1 quart of the milk. Then, to prevent spilling, add second quart of milk after placing dish in the oven. Bake in preheated moderate oven (325 degrees F) for 2-1/2 hours, stirring twice during the first hour. Stir the brown crust into pudding several times during the remainder of baking time. Add raisins 30-minutes before pudding is done. Then allow crust to form again. Serve with milk or cream, if desired. Makes 8 servings.

by ROSE ELLEN/N2RE

THE 10 YLs IN THE CLUB HAVE BEEN ASKED TO SUBMIT THEIR WRITE UP TO ME ALONG WITH a picture. So far I have had response from only three of you. Come on now, we cannot just talk about a few of us!!! We want your story. You can either give it to me at the next meeting or mail it to me. I know you do not want to be left out of the GCARC YL STORY. N2RE.

VHF ENGINEERING needs an experienced engineer to work on two-way communications equipment design. If interested, call Robert Brown at VHF engineering, 607-723-9574. (HR REPORT)

BILL BACHMAN is the new awards manager. Anyone wanting a club award should now see Bill WA2VEE.

DELLA PARKER after many years as awards manager is going to take it easy for a change. It will sure seem strange not to Della giving them out anymore. THANK YOU DELLA for the fine job you have done for so long.

CONGRATULATIONS TO RAY METZGER --WB2BZY, or should I say AG2 ? --- Ray is the newest EXTRA CLASS in the club. Gud luck with your new call when you get it RAY.....

AMATEUR AWARDS

Award hunting is a lot of fun, and it gives you something to shoot for when you are on the radio. There are a lot of different types of awards, some are very easy to get and some are very hard. I will try to have one in each CROSSTALK. The one in this issue I just received and I must say it is one of the nicer ones that I have. It is very colorful and makes a very nice addition to the shack wall. It is called the DLD AWARD, and is from Germany.

The award is available to licensed amateurs. QSL cards must be submitted along with a special form which is available from: H.P. Guenther, DL9XW, 446 Nordhorn, AM Stampel 22, West-Germany. The form you get for listing your DOKs will also show the amateur to whom the QSL cards are to be sent for checking. DLD is issued for working various DOKs of the DARC, (Districts Ortsverband Kenner District area Indicator) The DOK must be printed on the card.

There are 2 awards - DLD 100 and DLD 200, for contacts with 100 and 200 DOKs. Stations may use 3.5, 14, 21, and 28 MHz, but not 7 MHz. Any contact made on 3.5 MHz. by stations outside Europe will count double points.

In addition there is a DLD40 - 100 and 200 for contacts on 7 MHz only. So if you like things a little harder, then this is the one for you. The cost for the award and for the postage of the QSL cards to be returned is 10 IRCs. So start QSLing all the German stations that you work and (and there are a lot of them) and get a very nice Award.

This is a fairly easy one that can be gotten by some one on the novice bands without too much trouble. The Germans are QSL addicted and you will have NO trouble getting cards returned. Good hunting....

-AB2W-

(next month a little harder one to work on)

RADIO SHACK

working on something and need a part fast ? call
JIM PECK /W2LVW
Jim can help you with all your home entertainment
RADIOS, TAPE RECORDERS, HOME COMPUTERS
a fine selection of RADIO SHACK home equipment
PHONE (609) 468-0737
across from J.M Fields-RT. 45 Wenonah, N J 08090
RADIO SHACK

ENGRAVING & RUBBER STAMPS

BY
MILTON L. GOLDMAN
(K3WIL)
need rubber stamps, plastic signs, name tags
for a large selection and reliable service
PHONE (609) 456-0500
801 Crown PT. Road Westville NJ 08093

-- BOB'S ELECTRONICS--

FOR
RADIO AND TELEVISION
SERVICE

(at it's best)
CALL BOB - WA2MMA
609 - 468 - 0344

Specialized -- Communications

4 E. Barber Avenue. Woodbury, NJ 08096

FRAMES COMMUNICATIONS

324 GRANDVIEW AVENUE
PITMAN, N.J. 08071
609 - 589 - 5293

serving south jersey with Larson & Wilson
ANTENNAS & RADIOS

give Bill/WB2FJE a call

STAINLESS STEEL

Putting up a new antenna ? Well there is a place not too far from home that can supply you with the stainless steel nuts and bolts that you need to replace some of the junk that you get with most antennas. Wright or call, Elwick, Dept. 299, 230 Woods Lane, Somerdale, N.J. 08083. They Will send you a free catalog.

AB2W

THE CONTEST SEASON is soon to begin. Rigs are being tuned, antennas tweeded up. There will be basement lights burning at the "wee - hours" of the morning. Coffee pots will see overtime duty and the Telford's Tavern has already heard EXAGGERATED claims. Soon the serious contesters will be poised impatiently at their stations for the starting time, as horses dancing in the starting gates. Do you want to join in on the fun ??? The contest committee has selected teams to compete in Sweepstakes. Contact one of the committee members at the next club meeting to get on one of the teams. Don't be shy, it is a lot of fun. And you also help the clubs score to win over the other clubs in the nation...

OCT. 27 - 29	CQ WW, PHONE
NOV. 4 - 5	CW SS
NOV. 18 - 19	PHONE SS
NOV. 24 - 26	CQ WW, CW
DEC. 2 - 3	ARRL, 160 METER CONTEST
DEC. 9 - 10	ARRL, 10 METER CONTEST

So go get um and have fun..

JOHN - W2KI

THE KIEV BUZZ SAW

The signal, according to some radio operators who have heard it ratcheting over their headsets, sounds like "a buzz-saw" or "the whirring of helicopter blades." or "the continuous firing of machine guns." Since July of last year, short wave radio operators in Europe and the U.S. have been tormented by a mysterious radio beam that Western intelligence sources say emanates from what is probably the world's most powerful transmitter. A 2 - million-watt military radar station near Kiev.. Although it is still operating at its full, awesome power, The buzz saw has cut back from broadcasting hours at a time to scattered one-and-two minute bursts. Meanwhile, Western states can seemingly do little about the monster station.

DX DX DX XD DX DX DX DX DX DX DX DX DX DX DX DX

BOY!!!! The DX is coming in from every part of the globe. Now is the time to get your DXCC totals up. Dont say you will get it later, because after this cycle is over it will be a long time befor the next one... Twenty meters is still the best band for the good ones. Try your beam on the long path in the AM and PM, a lot of DX is found this way. Good DXING.....

SLOW CW NET ON 80 METERS IS 3.705. CALL ANYTIME.....

ARTICLES FOR NEXT CROSSTALK SHOULD BE IN BY NOV. 24; Pse try to be on time... PROGRAM for this month is a film. To be a